



Milling blanks

Premium quality for every requirement



Optimized standard version in implant quality.

A distinguishing feature of remanium® star MD II is its homogeneous composition which guarantees very high strength and high ductility. Good laser weldability and proven excellent ceramic bonding are further properties which provide the basis for the high degree of safety potential.



remanium® star MD II – standard quality

Product advantages:

- Proven remanium® star composition
- Certified and time-tested alloy for all applications in crown and bridge work
- Ideal for ceramic veneering using bonding ceramics in the conventional CTE range
- Very high ductility
- Good milling properties
- High strength type 3 / Typ 4* according to DIN EN ISO 22674 / DIN EN ISO 9693 for milling
- Good laser weldability

Technical data

Classification according to DIN EN ISO 22674	Type 3	Type 4
Yield strength** R _p 0.2	320 MPa	370 MPa
Tensile strength** R _m	506 MPa	570 MPa
Hardness** H	281 HV 10	276 HV 10
Elongation at rupture** A ₅	5.9 %	7.6 %
Modulus of elasticity** E	202 GPa	160 GPa
Density ρ	8.5 g/cm ³	
Solidus temperature T _s	1320 °C / 2408 °F	
Liquidus temperature T _l	1420 °C / 2588 °F	
CTE (25 °C - 500 °C / 77 °F - 932 °F) α	14.1 x 10 ⁻⁶ K ⁻¹	–

* After performing heat treatment on the subtractive manufactured components at 850 °C / 1562 °F for 1 hr.

**Variations of ± 10 % of the stated values are possible depending on the batch.

Composition (% by mass)

Co	Cr	W	Si
60.5	28.0	9.0	1.5

Further elements < 1 %: Mn, N, Nb. This product contains cobalt. Free from nickel, beryllium, lead, cadmium and iron.



Availability (ø 98.4 mm)

Thickness	Collar	Qty	REF
8 mm	without	1 piece	102-750-01
10 mm	without	1 piece	102-751-01
12 mm	10 mm	1 piece	102-752-01
13.5 mm	10 mm	1 piece	102-753-01
15 mm	10 mm	1 piece	102-754-01
18 mm	10 mm	1 piece	102-755-01
20 mm	10 mm	1 piece	102-756-01
25 mm	10 mm	1 piece	102-757-01



Titanium of low hardness.

Pure titanium blank for all applications in crown and bridge work. Highly biocompatible and gentle on the tools during milling.



rematitan[®] blank Ti2 – pure titanium

Product advantages:

- High biocompatibility
- Ideal for ceramic veneering using bonding ceramics suitable for titanium such as ceraMotion[®] Ti
- High degree of corrosion resistance
- Good milling properties due to low hardness

Technical data

0.2 % yield strength $R_{p0.2}$	380 MPa
Tensile strength R_m	505 MPa
Hardness H	180 HV 10
Elongation A_5	34 %
Modulus of elasticity E	120 GPa
Density ρ	4.5 g / cm ³
CTE 25 °C–500 °C / 77 °F–932 °F α	9.6 x 10 ⁻⁶ K ⁻¹
Melting point	1665 °C / 3029 °F

Composition (% by mass)

Ti
99.3

Additional elements < 1 %: Fe, O



Availability (ø 98.4 mm)

Thickness	Collar	Qty	REF
10.0 mm	without	1 piece	100-202-10
12.0 mm	10 mm	1 piece	100-202-12
15.0 mm	10 mm	1 piece	100-202-15
20.0 mm	10 mm	1 piece	100-202-20



For high demands.

Dental alloy based on titanium (TiAl6V4) in ELI quality (class 23) with increased mechanical strength for the bonding technique. Particularly suitable for long-span, delicate framework structures and for implant work.



rematitan[®] blank Ti5 – Titanium alloy

Product benefits:

- High mechanical strength
- High level of biocompatibility in implant quality
- Ideal for ceramic veneering using bonding ceramics suitable for titanium such as ceraMotion[®] Ti
- High degree of corrosion resistance
- Typ 4 according to DIN EN ISO 22674 / DIN EN ISO 9693 / DIN EN ISO 5832-3 for milling

Technical data

0.2 % yield strength $R_{p0.2}$	832 MPa
Tensile strength R_m	908 MPa
Hardness H	285 HV 10
Elongation A_5	7 %
Modulus of elasticity E	120 GPa
Density ρ	4.3 g / cm ³
CTE 25 °C–500 °C / 77 °F – 932 °F α	10.0 x 10 ⁻⁶ K ⁻¹
Solidus temperature T_s	1605 °C / 2921 °F
Liquidus temperature T_l	1650 °C / 3002 °F

Composition (% by mass)

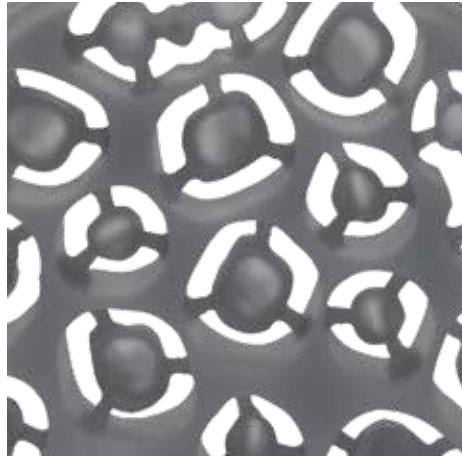
Ti	Al	V
89.0	6.0	4.0

Additional elements < 1 %: Fe, O



Availability (ø 98.4 mm)

Thickness	Collar	Qty	REF
10 mm	without	1 piece	100-205-10
12 mm	10 mm	1 piece	100-205-12
15 mm	10 mm	1 piece	100-205-15
20 mm	10 mm	1 piece	100-205-20



Wax milling made easy.

Wax blanks with excellent milling properties for the manufacture of crowns and bridges or cast partial dentures using the CAD/Vest process. Can be processed on all milling machines suitable for milling blanks with standard dimensions.

StarWax Blank grey is ideal for CAD/Vest crowns and bridges to be pressed or cast.

StarWax Blank blue is ideal for CAD/Vest cast partial dentures to be cast.

StarWax blanks – for pressing or casting

Product advantages

StarWax Blank grey:

- Residue-free burnout
- High edge strength
- Slightly elastic

Product advantages

StarWax Blank blue:

- Tension-free
- High fracture strength
- Accurate fit

Technical data

Shade	grey, blue
Dripping point	100 °C - 130 °C / 212 °F - 266 °F
Density ρ	0.92 g/cm ³ - 0.97 g/cm ³
Solubility in water	insoluble

Composition: synthetic wax

Availability (ø 98.5 mm with collar)

Thickness	Shade	Qty	REF
20 mm	grey	1 piece	120-230-00
25 mm	blue	1 piece	120-235-00



Strong, aesthetic & multi-shaded.

The multi-shaded, multi-layered zirconium oxide ceraMotion® Z Hybrid is a truly multi-purpose material. In one blank, it combines the aesthetics of a ≥ 800 MPa zirconium oxide with the strength of a highly translucent zirconium oxide.

ceraMotion® Z Hybrid offers pure aesthetics and is suitable for all work in the anterior and posterior area.

By means of a special high-tech process, two different zirconium oxide materials are processed in one blank. ceraMotion® Z Hybrid is available in the popular V-shades and bleach shades and offers reliable shade reproduction.

The machinability of ceraMotion® Z Hybrid is excellent and the material is suitable for all open CAD/CAM systems. We primarily recommend this material for monolithic work that is aesthetically demanding, and for finishing with a paste ceramic (e.g. ceraMotion® One Touch). It is also possible to continue processing with a classic veneering ceramic (e.g. ceraMotion® Zr).

Product benefits:

- Reliable reproducibility for high-level aesthetics
- Multiple indications due to maximum strength in the dentin area
- Natural and smooth shade transitions from cervical to incisal
- Available in the popular V-shades + bleach shades
- Excellent machinability
- Recommended sintering temperature 1480 °C / 2696 °F
- Translucency 44 % - 47 % (non-shaded, 1 mm)
- Optimum finishing with ceraMotion® One Touch



A1 A2 A3 A3.5 A4 B1 B2 C2 BL1 BL2

ceraMotion®
One Touch

The aesthetic finish for
monolithic all-ceramic
restorations.



ceraMotion® Z Hybrid

Technical data

Type II class 5 dental ceramic according to EN ISO 6872
Shades: Bleach 1, Bleach 2, A1, A2, A3, A3.5,
A4, B1, B2, C2

- Material 3Y/4Y-ZrO₂
- Diameter 98.3 mm
- Flexural strength ≥ 800 MPa
- Density > 6.04 g/cm³
- Solubility < 10 µg/cm²
- CTE 10.5 x 10⁻⁶ K⁻¹

Chemical composition

ZrO ₂ +HfO ₂ +Y ₂ O ₃	Y ₂ O ₃	Al ₂ O ₃	other oxides
> 98 %	5.8 % – 9.7 %	< 0.5 %	< 1.5 %

These values were measured on test samples and are typical for the material. The product properties may, however, deviate from these values depending on the component design and the forming process.

Shade	REF (14 mm)	REF (18 mm)	REF (22 mm)	Qty
A1	272-411-14	272-411-18	272-411-22	1 piece
A2	272-412-14	272-412-18	272-412-22	1 piece
A3	272-413-14	272-413-18	272-413-22	1 piece
A3.5	272-415-14	272-415-18	272-415-22	1 piece
A4	272-414-14	272-414-18	272-414-22	1 piece
B1	272-421-14	272-421-18	272-421-22	1 piece
B2	272-422-14	272-422-18	272-422-22	1 piece
C2	272-432-14	272-432-18	272-432-22	1 piece
Bleach 1	272-300-14	272-300-18	272-300-22	1 piece
Bleach 2	272-400-14	272-400-18	272-400-22	1 piece



Ultra-highly translucent and multi-shaded.

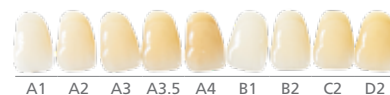
The multi-shaded, pre-shaded and ultra-highly translucent zirconium oxide ceraMotion® Z Cubic Multishade is suitable for inlays, veneers, single crowns and 3-unit bridges.

With a translucency of 49%, the restoration shows natural light dynamics after sintering and meets the highest aesthetic demands. ceraMotion® Z Cubic Multishade is available in the popular V-shades and offers reliable shade reproduction.

The machinability of ceraMotion® Z Cubic Multishade is excellent and the material is suitable for all open CAD/CAM systems. We primarily recommend this material for monolithic work that is aesthetically demanding. It can be finished with a speedy, yet aesthetic veneering using a paste ceramic (e.g. ceraMotion® One Touch). It is also possible to continue processing with a classic veneering ceramic (e.g. ceraMotion® Zr).

Product benefits:

- Reliable reproducibility for high-level aesthetics
- Natural and smooth shade transitions from cervical to incisal
- Available in the popular V-shades
- Particularly suitable for inlays, onlays, monolithic crowns and 3-unit bridges
- Excellent machinability
- Recommended sintering temperature 1450 °C / 2786 °F
- Translucency 49% (non-shaded, 1 mm)
- Optimum finishing with ceraMotion® One Touch



ceraMotion®
One Touch

The aesthetic finish for
monolithic all-ceramic
restorations.



ceraMotion® Z Cubic Multishade

Technical data

Type II class 4 dental ceramic according to EN ISO 6872
Shades: A1, A2, A3, A3.5, A4, B1, B2, C2, D2

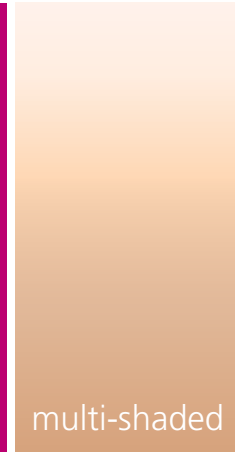
- Material 5Y-ZrO₂
- Diameter 98.3 mm
- Flexural strength ≥ 600 MPa
- Density > 6.04 g/cm³
- Solubility < 10 µg/cm²
- CTE 10.5 x 10⁻⁶ K⁻¹

Chemical composition

ZrO ₂ +HfO ₂ +Y ₂ O ₃	Y ₂ O ₃	Al ₂ O ₃	other oxides
> 98 %	8.2 % – 9.7 %	< 0.5 %	< 1.5 %

These values were measured on test samples and are typical for the material. The product properties may, however, deviate from these values depending on the component design and the forming process.

Shade	REF (14 mm)	REF (18 mm)	REF (22 mm)	Qty
A1	272-311-14	272-311-18	272-311-22	1 piece
A2	272-312-14	272-312-18	272-312-22	1 piece
A3	272-313-14	272-313-18	272-313-22	1 piece
A3.5	272-315-14	272-315-18	272-315-22	1 piece
A4	272-314-14	272-314-18	272-314-22	1 piece
B1	272-321-14	272-321-18	272-321-22	1 piece
B2	272-322-14	272-322-18	272-322-22	1 piece
C2	272-332-14	272-332-18	272-332-22	1 piece
D2	272-333-14	272-333-18	272-333-22	1 piece



Strong, highly translucent and multi-shaded.

The multi-shaded, pre-shaded and highly translucent zirconium oxide ceraMotion® Z HT Multishade is suitable for all work in the anterior and posterior area.

The high strength of ≥ 800 MPa offers maximum safety from the single crown to multi-element restorations or implant sub-structures. After sintering, the multi-layer shaded blank shows the natural shade gradient from the dentin to the incisal area, in a flowing gradient.

ceraMotion® Z HT Multishade is available in the popular V-shades and offers reliable reproducibility whilst meeting high aesthetic demands.

The machinability of ceraMotion® Z HT Multishade is excellent and the material is suitable for all open CAD/CAM systems. We primarily recommend this material for monolithic work that is aesthetically demanding. It can be finished with a speedy, yet aesthetic veneering using a paste ceramic (e.g. ceraMotion® One Touch). It is also possible to continue processing with a classic veneering ceramic (e.g. ceraMotion® Zr).

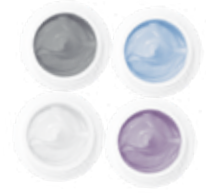
Product benefits:

- Natural and smooth shade transitions from cervical to incisal
- Highly efficient (no pre-shading required)
- Reliable reproducibility of classic V-shades
- For high aesthetic demands
- Multiple indications due to high strength
- Particularly suitable for monolithic crowns and bridges
- Excellent machinability
- Recommended sintering temperature 1530 °C / 2786 °F
- Translucency 43 % (non-shaded, 1 mm)
- Optimum finishing with ceraMotion® One Touch



ceraMotion®
One Touch

The aesthetic finish for
monolithic all-ceramic
restorations.



ceraMotion® Z HT Multishade

Technical data

Type II class 5 dental ceramic according to EN ISO 6872
Shades: A1, A2, A3, A3.5, A4, B1, B2, C2, D2

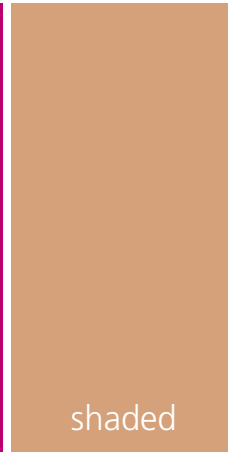
- Material 3Y-ZrO₂
- Diameter 98.3 mm
- Flexural strength ≥ 800 MPa
- Density > 6.08 g/cm³
- Solubility < 10 µg/cm²
- CTE 10.5 x 10⁻⁶ K⁻¹

Chemical composition

ZrO ₂ +HfO ₂ +Y ₂ O ₃	Y ₂ O ₃	Al ₂ O ₃	other oxides
> 98 %	4.5 % – 6 %	< 0.5 %	< 1.5 %

These values were measured on test samples and are typical for the material. The product properties may, however, deviate from these values depending on the component design and the forming process.

Shade	REF (14 mm)	REF (18 mm)	REF (22 mm)	REF (25 mm)	Qty
A1	272-211-14	272-211-18	272-211-22	272-211-25	1 piece
A2	272-212-14	272-212-18	272-212-22	272-212-25	1 piece
A3	272-213-14	272-213-18	272-213-22	272-213-25	1 piece
A3.5	272-215-14	272-215-18	272-215-22	272-215-25	1 piece
A4	272-214-14	272-214-18	272-214-22	272-214-25	1 piece
B1	272-221-14	272-221-18	272-221-22	272-221-25	1 piece
B2	272-222-14	272-222-18	272-222-22	272-222-25	1 piece
C2	272-232-14	272-232-18	272-232-22	272-232-25	1 piece
D2	272-233-14	272-233-18	272-233-22	272-233-25	1 piece



Strong, highly translucent and shaded.

The monochrome, preshaded and highly translucent zirconium oxide ceraMotion® Z HT Shade is suitable for all work in the anterior and posterior area.

The high strength of ≥ 800 MPa offers maximum safety from the single crown to multi-element restorations or implant sub-structures. The blanks have already been shaded homogeneously, making it possible to work highly efficiently, since aesthetic individualization can begin immediately after sintering. The good shading of the blanks ensures a reliable reproducibility of all V-Classic shades.

The machinability of ceraMotion® Z HT Shade is excellent and the material is suitable for all open CAD/CAM systems. We primarily recommend this material for monolithic work. It can be finished with a speedy, yet aesthetic veneering using a paste ceramic (e.g. ceraMotion® One Touch). It is also possible to continue processing with a classic veneering ceramic (e.g. ceraMotion® Zr).

Product benefits:

- Highly efficient (no pre-shading required)
- Ensures consistent shade results thanks to pre-shaded blanks
- Reliability due to very high strength
- Particularly suitable for monolithic crowns and bridges
- Excellent machinability
- Recommended sintering temperature 1530 °C / 2786 °F
- Translucency 43 % (non-shaded, 1 mm)
- Optimum finishing with ceraMotion® One Touch



ceraMotion®
One Touch

The aesthetic finish for
monolithic all-ceramic
restorations.



ceraMotion® Z HT Shade

Technical data

Type II class 5 dental ceramic according to EN ISO 6872
Shades: A1, A2, A3, A3.5, A4, B1, B2, B3, B4,
C1, C2, C3, C4, D2, D3, D4

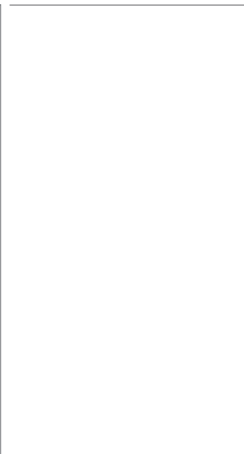
- Material 3Y-ZrO₂
- Diameter 98.3 mm
- Flexural strength ≥ 800 MPa
- Density > 6.08 g/cm³
- Solubility < 10 µg/cm²
- CTE 10.5 x 10⁻⁶ K⁻¹

Chemical composition

ZrO ₂ +HfO ₂ +Y ₂ O ₃	Y ₂ O ₃	Al ₂ O ₃	other oxides
> 98.0 %	4.5 % – 6 %	< 0.5 %	< 1.5 %

These values were measured on test samples and are typical for the material. The product properties may, however, deviate from these values depending on the component design and the forming process.

Shade	REF (14 mm)	REF (18 mm)	REF (22 mm)	REF (25 mm)	Qty
A1	272-111-14	272-111-18	272-111-22	272-111-25	1 piece
A2	272-112-14	272-112-18	272-112-22	272-112-25	1 piece
A3	272-113-14	272-113-18	272-113-22	272-113-25	1 piece
A3.5	272-115-14	272-115-18	272-115-22	272-115-25	1 piece
A4	272-114-14	272-114-18	272-114-22	272-114-25	1 piece
B1	272-121-14	272-121-18	272-121-22	272-121-25	1 piece
B2	272-122-14	272-122-18	272-122-22	272-122-25	1 piece
B3	272-123-14	272-123-18	272-123-22	272-123-25	1 piece
B4	272-124-14	272-124-18	272-124-22	272-124-25	1 piece
C1	272-131-14	272-131-18	272-131-22	272-131-25	1 piece
C2	272-132-14	272-132-18	272-132-22	272-132-25	1 piece
C3	272-133-14	272-133-18	272-133-22	272-133-25	1 piece
C4	272-134-14	272-134-18	272-134-22	272-134-25	1 piece
D2	272-142-14	272-142-18	272-142-22	272-142-25	1 piece
D3	272-143-14	272-143-18	272-143-22	272-143-25	1 piece
D4	272-144-14	272-144-18	272-144-22	272-144-25	1 piece



Strong and highly translucent.

This classic, highly translucent and reliable zirconium oxide ceraMotion® Z HT White is suitable for all work in the anterior and posterior area.

The high strength of ≥ 800 MPa offers high safety from the single crown to multi-element restorations or implant sub-structures. Due to the increased translucency of 43%, ceraMotion® Z HT White is the optimal basis for the production of aesthetic restorations.

The machinability of ceraMotion® Z HT White is excellent and the material is suitable for all open CAD/CAM systems. We recommend this material primarily as a framework material for classic veneering (e.g. with ceraMotion® Zr).

Product benefits:

- Reliability due to very high strength
- Excellent machinability
- Suitable for shading
- Recommended sintering temperature
1530 °C / 2786 °F
- Translucency 43 % (non-shaded, 1 mm)
- Optimum finishing/veneering with ceraMotion® Zr

ceraMotion® Z HT White

Technical data

Type II class 5 dental ceramic according to EN ISO 6872

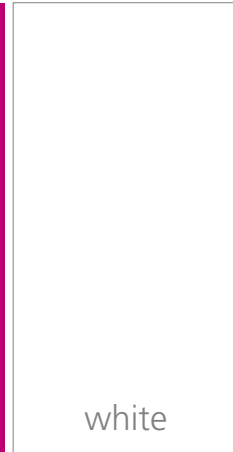
- Material 3Y-ZrO₂
- Diameter 98.3 mm
- Flexural strength ≥ 800 MPa
- Density > 6.06 g/cm³
- Solubility < 10 µg/cm²
- CTE 10.5 x 10⁻⁶ K⁻¹

Chemical composition

ZrO ₂ +HfO ₂ +Y ₂ O ₃	Y ₂ O ₃	Al ₂ O ₃	other oxides
> 98.0 %	4.5 % – 6.0 %	< 0.5 %	< 1.5 %

These values were measured on test samples and are typical for the material. The product properties may, however, deviate from these values depending on the component design and the forming process.

Thickness	Shade	REF	Qty
14 mm	White	272-094-14	1 piece
18 mm	White	272-094-18	1 piece
22 mm	White	272-094-22	1 piece
25 mm	White	272-094-25	1 piece



Strong & proven.

The proven and reliable 3Y-ZrO₂ is a high-performance zirconium oxide suitable for all work in the anterior and posterior area.

The high strength of ≥ 800 MPa offers a high level of safety, particularly for multi-element restorations or stable implant sub-structures. Due to the reduced translucency of 39 %, ceraMotion® Z White allows the optimal masking of discolored stumps and metal abutments.

The machinability of ceraMotion® Z White is excellent and the material is suitable for all open CAD/CAM systems. We recommend this material primarily as a framework material for classic veneering (e.g. with ceraMotion® Zr).

Product benefits:

- Reliability due to very high strength
- Stump/abutment masking possible due to reduced translucency
- Excellent machinability
- Suitable for shading
- Recommended sintering temperature 1530 °C / 2786 °F
- Translucency 39 % (non-shaded, 1 mm)
- Optimum finishing/veneering with ceraMotion® Zr

ceraMotion®
One Touch

The aesthetic finish for
monolithic all-ceramic
restorations.



ceraMotion® Z White

Technical data

Type II class 5 dental ceramic according to EN ISO 6872

- Material 3Y-ZrO₂
- Diameter 98.3 mm
- Flexural strength ≥ 800 MPa
- Density > 6.06 g/cm³
- Solubility < 10 µg/cm²
- CTE 10.5 x 10⁻⁶ K⁻¹

Chemical composition

ZrO ₂ +HfO ₂ +Y ₂ O ₃	Y ₂ O ₃	Al ₂ O ₃	other oxides
> 98.0 %	4.5 % – 6.0 %	< 0.5 %	< 1.5 %

These values were measured on test samples and are typical for the material. The product properties may, however, deviate from these values depending on the component design and the forming process.

Thickness	Shade	REF	Qty
14 mm	White	272-098-14	1 piece
18 mm	White	272-098-18	1 piece
22 mm	White	272-098-22	1 piece
25 mm	White	272-098-25	1 piece

Ceramic solutions – made by Dentaaurum



Under the successful umbrella brand ceraMotion®, Dentaaurum Ceramics produces more than 1,500 products in compliance with the highest quality standards.

These include products from all areas for modern all-ceramic restorations - from the framework material to the glaze.

Paste ceramics



ceraMotion®
One Touch

ceraMotion®
One Touch **No Limits**

ceraMotion®
One Touch **Pink**

Lithium disilicate



ceraMotion®
press invest

ceraMotion®
LiSi

Software



ceraMotion®
CADback



Monolithic, cut-back, partially or fully veneered

The manufacturing method depends on the patient case to be treated. Whatever the technology, ceraMotion® has the right answer for all methods.



Glaze pastes

ceraMotion[®]_{Zr} Paste Glaze

ceraMotion[®]_{Zr} Paste Glaze Bright



Veneering ceramics

ceraMotion[®]_{Zr}

ceraMotion[®]_{Me}

ceraMotion[®]_{Ti}



Zirconium oxide

ceraMotion[®] Z



CONTACT
DENTAURUM

Dentaurum GmbH & Co. KG



Turnstr. 31
75228 Ispringen · Germany



info@dentaurum.com
www.dentaurum.com



+49 72 31/803-0



ONLINE SHOP
SHOP.DENTAURUM.COM

