

Installation instructions

Contents

1	Manufacturer	3
2	Content	3
3	Unpacking and connecting the orthoX® scan 3D model scanner	3
4	Installing the scanner software orthoX® scan	4
4.1	Copying the calibration data	6
4.2	Axis calibration	7
4.2.1	Securing the model on the model holder	7
4.2.2	Placing model holder in the orthoX® scan model scanner	7
4.2.3	Starting axis calibration	8
5	Installing orthoX® file	8
5.1	Activating orthoX® file	10
5.2	Selecting the database folder	11
6	Quality information	11

Dear customer,

Thank you for choosing a quality product from Dentaureum.

It is essential to read these installation instructions and the corresponding instructions for use carefully and adhere to them to ensure safe, efficient use and ensure that you and your patients gain full benefit. Instructions for use cannot describe every eventuality and possible application. In case of questions or ideas, please contact our hotline.

As our products are regularly upgraded, we recommend that you always carefully read the current Instructions for use supplied with the product and stored in the Internet at www.dentaureum.com, even though you may frequently use the same product.

To install orthoX®, please carry out the following steps in the given order. Please note that administrator rights are required for installation. The antivirus scanner may have to be deactivated during installation.



Read the GREY boxes for useful tips.



Read the BLUE boxes to avoid common errors and find safety information.

1 Manufacturer

Dentaurum GmbH & Co. KG | Turnstr. 31 | 75228 Ispringen | Germany

2 Content

- 3D model scanner orthoX® scan (REF 075-000-00)
- 1x power cable
- 2x USB cable
- Installation instructions (printed)
- USB storage device

3 Unpacking and connecting the orthoX® scan 3D model scanner



Remove the 3D model scanner from the packaging with both hands.



Connect the 3D model scanner to the power supply.

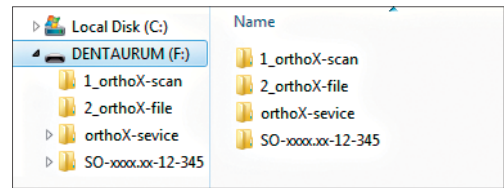


Connect the 3D model scanner with the computer using the USB cables.

 Remove the transport protection under the lid.

Turn on the computer and the 3D model scanner.

Open the USB directory by opening *Windows®* Explorer* and select *Computer*. Find the memory listed in the removable media.

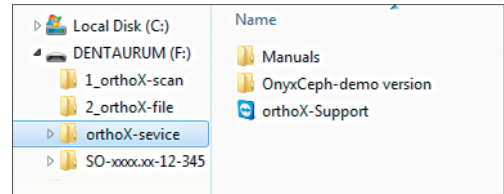


You will find various folders with the installation files and a folder named *orthoX-service* in the USB directory.

The *orthoX-Support.exe* file is used to activate the online support.

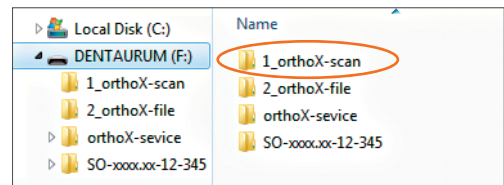
You can find a demonstration version of OnyxCeph^{3™} ** in the *OnyxCeph-demo version* folder (use *OnyxCDMenu.exe* to start the demonstration).

You will find all of the Instructions for use in the folder *Manuals*.

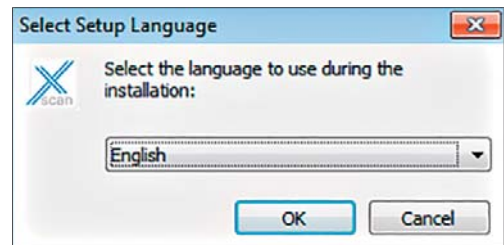


4 Installing the scanner software orthoX® scan

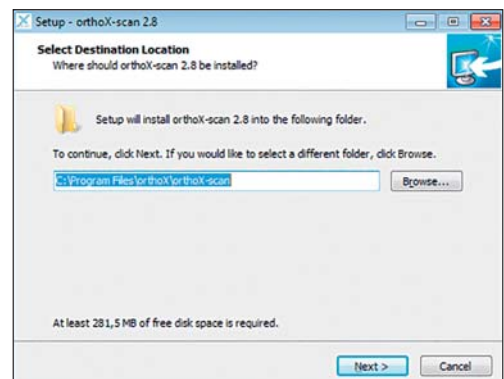
Open the folder *1_orthoX-scan* and run the *orthoX-scan.exe* file. The installation of the scanner software will start.



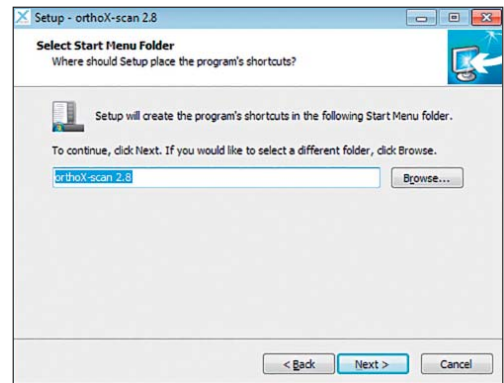
After starting the installation, you will be asked to choose a language. Confirm with *OK*.



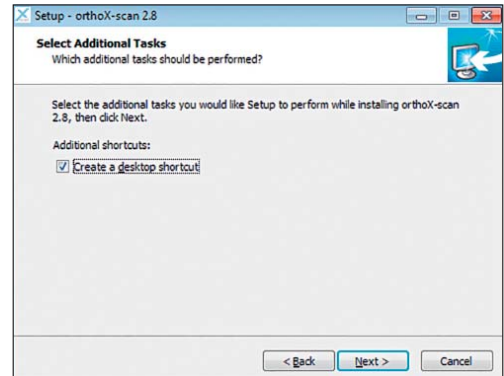
In the window that now appears you can change the installation path. It is recommended to leave this path as it is. Confirm with *Next >*.



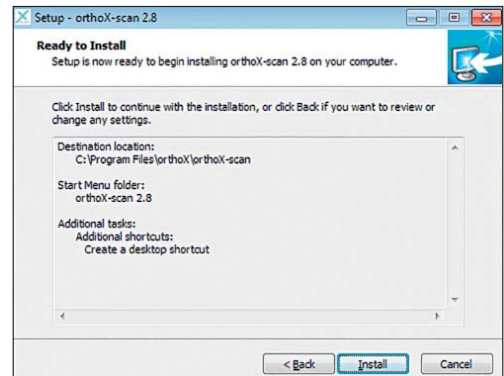
In this step you can specify the link in the start menu folder. It is recommended not to change this. Confirm with **Next>**.



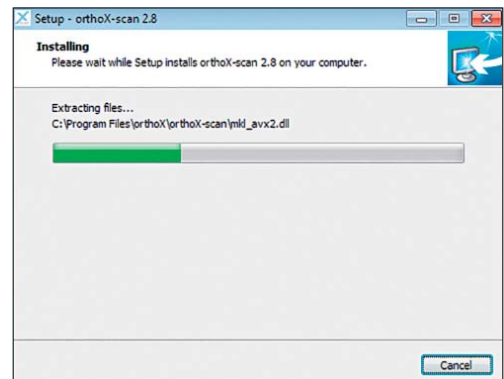
In this window you can choose to create a desktop shortcut. Click on **Create a desktop shortcut** and confirm with **Next>**.



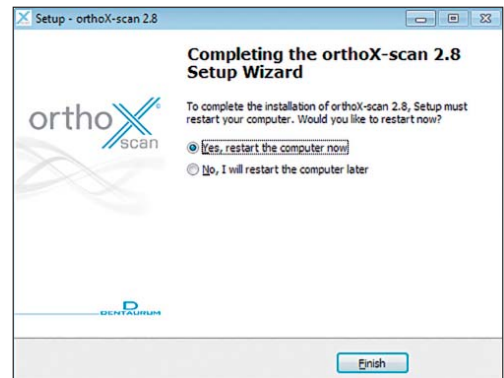
You will now receive a summary of the installation settings. If the settings are correct, click on **Install** to carry out installation of the orthoX[®] scan software.



During installation, a status bar displays the progress of the installation procedure.

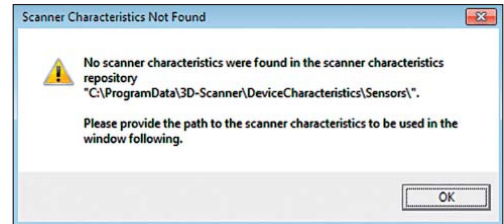


The computer must be restarted to complete the installation. Confirm with *Finish*. The computer will restart.

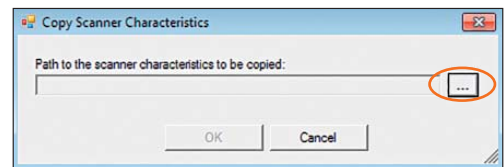


4.1 Copying the calibration data

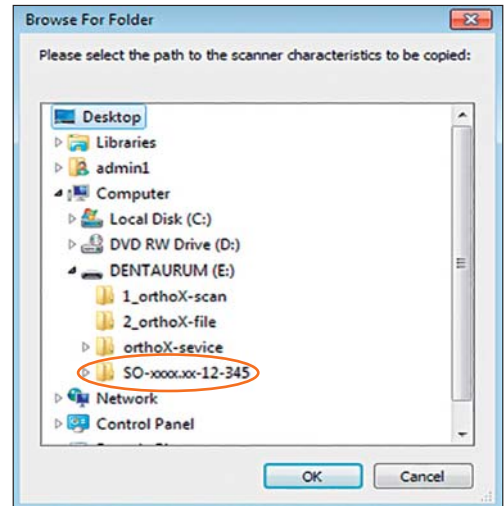
When first starting the orthoX® scan software, you will be asked where the scan data is stored. Confirm with *OK*.



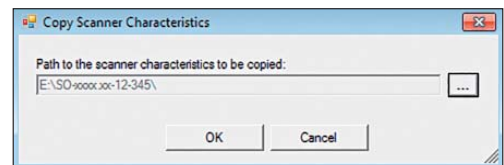
Select the path to the scanner characteristics.



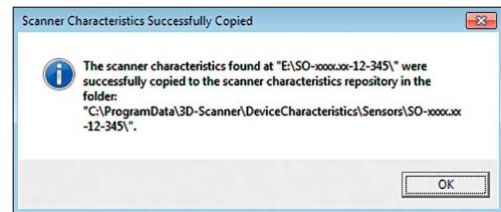
This can be found on the USB storage device provided.



Confirm with *OK*.



Wait until the copying process is completed. Confirm with **OK**.

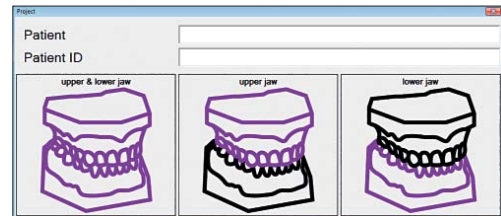


Once copying is completed, the orthoX[®]scan software will start automatically. Next, carry out the axis calibration.



4.2 Axis calibration

Start the orthoX[®]scan software and close the project window.



4.2.1 Securing model on model holder

Place the model in the model holder with the anterior teeth facing towards the sure-grip screw. Secure the model on the model holder by tightening the sure-grip screw.



4.2.2 Placing model holder in the orthoX[®] scan model scanner

The model holder will only fit on the magnet retention plate in the scanner if you insert it in the correct position. The anterior teeth of the model on the holder must always face the camera on the inside of the scanner.



4.2.3 Starting axis calibration

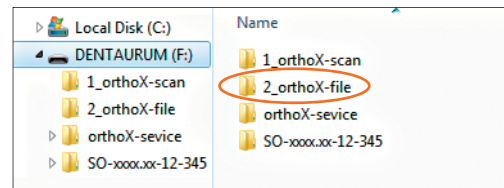
To start axis calibration, go to *Options* ⇒ *Service* ⇒ *Axis calibration* in the menu. After axis calibration, click on *OK* to finish the process. The 3D model scanner is now ready to use.

Close the orthoX®scan software and install the orthoX®file software for digital basing and archiving.

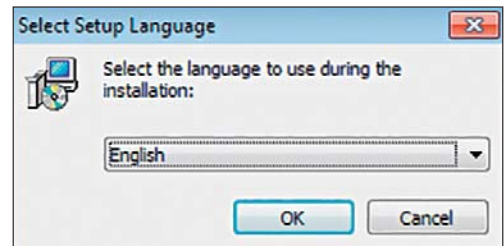


5 Installing orthoX® file

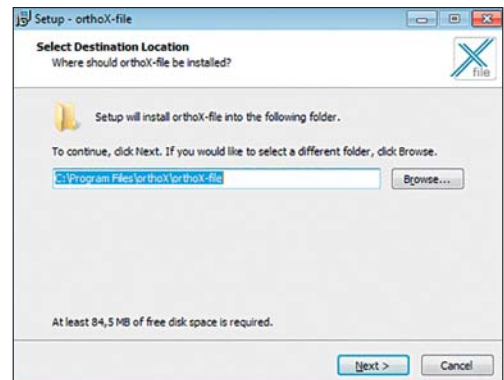
Open the folder *2_orthoX-file* and run the *setup.exe* file. The installation will start.



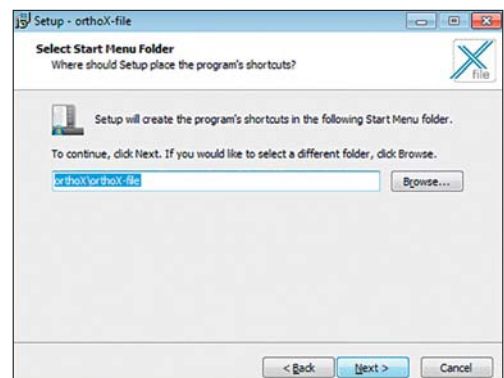
After starting the installation, you will be asked to choose a language. Confirm with *OK*.



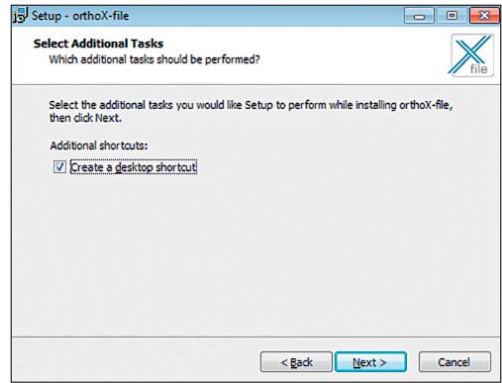
In the window that now appears you can change the installation path. It is recommended to leave this path as it is. Confirm with *Next*>.



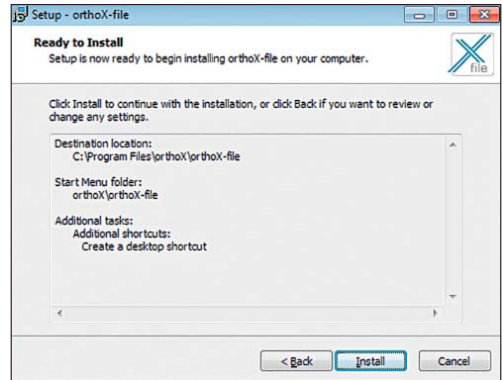
In this step you can specify the link in the start menu folder. It is recommended not to change this. Confirm with *Next*>.



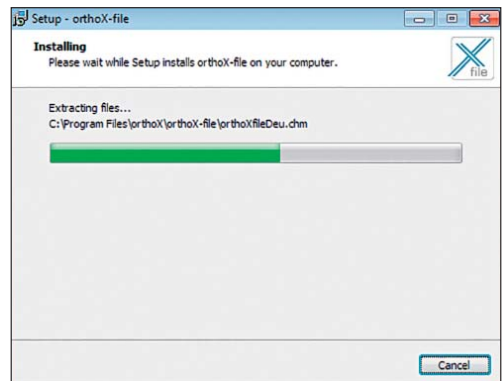
In this window you can choose to create a desktop shortcut. Click on *Create a desktop shortcut* and confirm with *Next >*.



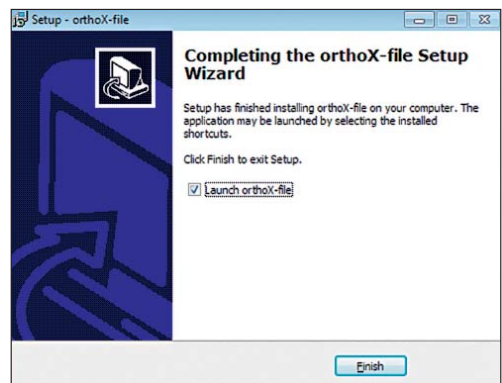
You will now receive a summary of the installation settings. If the settings are correct, click on *Install* to carry out installation of the orthoX® file software.



During installation, a status bar displays the progress of the installation procedure.



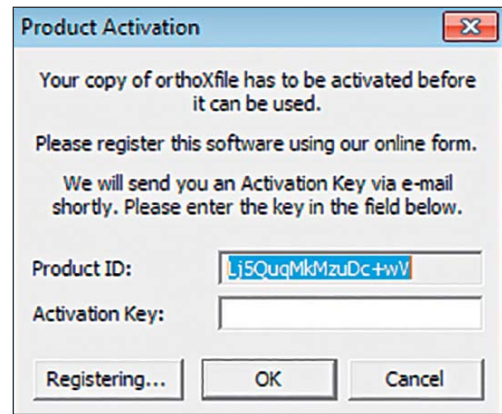
Click on *Finish* to complete installation.



5.1 Activating orthoX® file

When starting orthoX® file for the first time, you will be requested to activate the product. Click on **Registering...**

Click on **OK** to work with the software in demonstration mode until you receive the activation key.



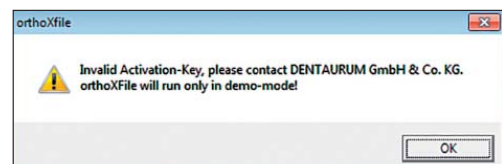
The website orthoX® Activation will open. Complete the mandatory boxes and click on **Submit**.




You will see a message confirming that you have successfully registered. An activation code will be sent to you shortly to the registered email address.



This message remains until you enter the Activation Key. The following message then appears which you should confirm by clicking on **OK**.

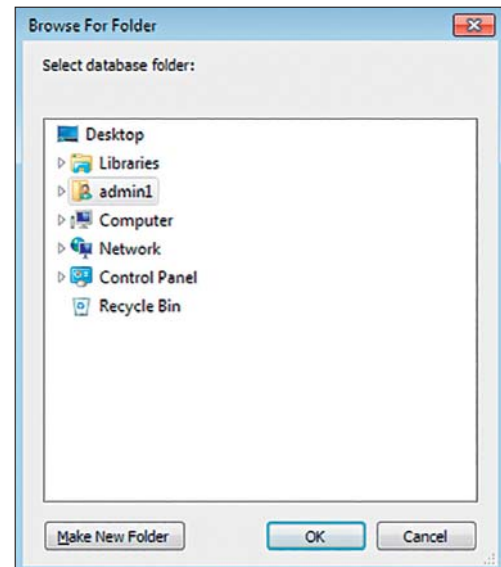


5.2 Selecting the database folder

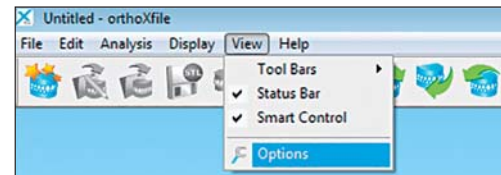
Before you can use the software, you have to specify a folder in which the stored model will be saved. The **Browse For Folder** window appears when the wizard is first used . After this, the software is ready to use.



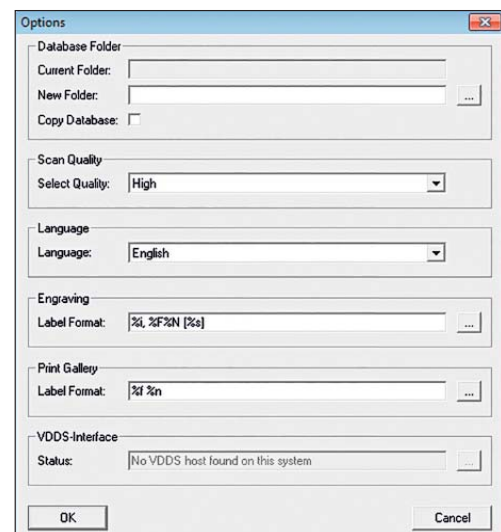
This folder should be saved regularly. If you would like the folder to be accessed by other computers, it should be created on a network drive.



The folder can also be activated directly via **View** ⇒ **Options**.



Under **Options** you have the possibility to select a new folder for the database and/or to copy it to another folder.



6 Quality information

Dentaurum ensures a faultless quality of the products manufactured by us. These recommendations are based upon Dentaurum's own experiences. The user is solely responsible for the correct use of the 3D model scanner and the generation of scanned data. Responsibility for failures cannot be taken, as we have no influence on the processing on site.

Should you have any questions, please contact your local representative. You can also find information on orthoX® at www.dentaurum.com.

Dentaurum Group

Germany | Benelux | España | France | Italia | Switzerland | Australia | Canada | USA
and in more than 130 countries worldwide.



DENTAURUM
QUALITY
WORLDWIDE
UNIQUE

➔ For more information on our products and services, please visit www.dentaurum.com

Date of information: 03/17

Subject to modifications



www.dentaurum.com



Like us on Facebook!



YouTube

Visit us on YouTube!



Follow us on Pinterest!

D
DENTAURUM