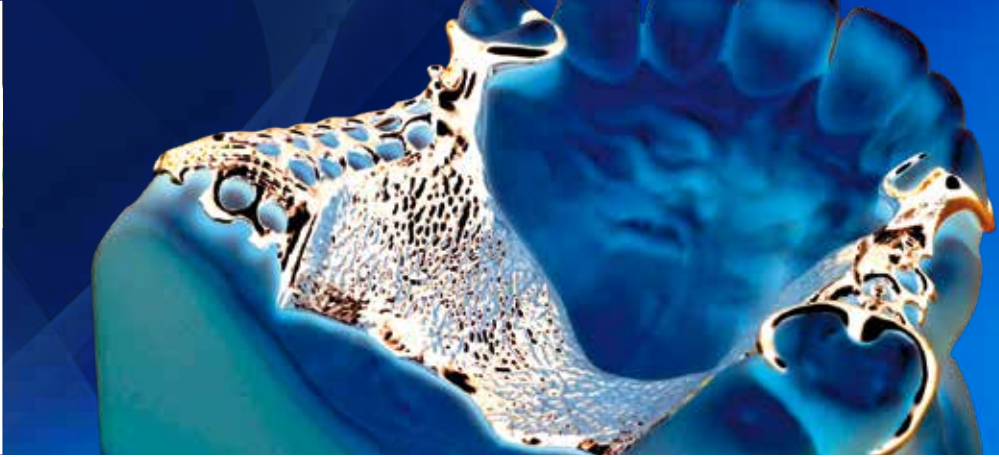


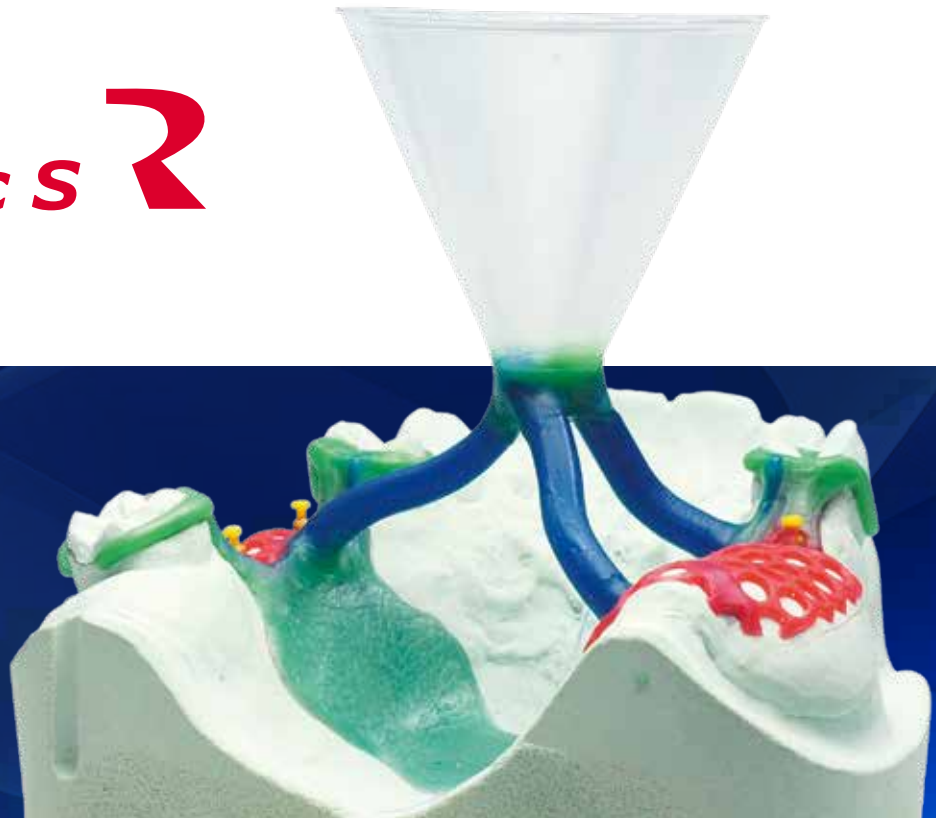
# rema<sup>®</sup>



The investment material for cast partial dentures.



Fast...



### The perfect universal investment material.

rema<sup>®</sup> dynamic S is particularly flexible and easy to use. Its high edge stability, smoothness and well coordinated expansion all bring forth to an excellent fitting accuracy even with complicated structures.

- Complete flexibility in the preheating stage.
  - speed heating
  - reduced quick heating from 600 °C / 1112 °F
  - conventional preheating
- Suitable for combination prosthetics.
  - impressive accuracy even with complicated structures
- Universally suitable in all duplicating procedures.
  - compatible with duplicating materials silicone and gel
- Excellent accuracy.
  - knife edge stability and smoothness

Working time	3-4 min
Preheating	Consistent heating, Partial-Speed process, Speed process
Preheating temperature	900-950 °C / 1652 - 1742 °F
Compression resistance	12 MPa
Color	green

Investment material	
20 kg (112 x 180 g)	REF 105-600-50
20 kg (40 x 500 g)	REF 105-610-50
20 kg (8 x 2.5 kg)	REF 105-610-85
8 kg (16 x 500 g)	REF 105-609-50
Mixing liquid	
1 l Standard	REF 105-620-50
1 l Speed	REF 105-623-50



# flexible and with a perfect fit.

Excellent results in every laboratory environment.

With the casting investment material rema<sup>®</sup> Exakt F Dentaurum research has succeeded in improving the well proven classic investment material rema<sup>®</sup> Exakt to an even greater extent. The new finer grain size makes the investment material even more attractive and provides excellent processing characteristics and fitting accuracy. The millionfold proven recipe has been improved.

- Improved development of the classic rema<sup>®</sup> Exakt.
  - the well proven recipe was optimized with a finer grain size
- Very easy, pleasant working.
  - fine consistency
  - good flowability
  - adequate working time
- Very high accuracy.
  - perfectly fitting castings in all areas
- Especially light devestment.
  - very soft devestment and light sand blasting



rema<sup>®</sup>  
**Exakt F** 

Working time	3-4 min
Preheating	Consistent heating, Heating with holding time
Preheating temperature	950-1000 °C/1742-1832 °F
Compression resistance	10-14 MPa
Color	pink

#### Investment material

20 kg (50 x 400 g)	REF 105-020-50
20 kg (100 x 200 g)	REF 105-021-50
8 kg (20 x 400 g)	REF 105-008-50

#### Mixing liquid

1 l	REF 105-501-00
-----	----------------

# Dentaurum Group

Germany | Benelux | España | France | Italia | Switzerland | Australia | Canada | USA  
and in more than 130 countries worldwide.



DENTAURUM  
QUALITY  
WORLDWIDE  
UNIQUE



Date of information: 10/19  
Subject to modifications

