

*dinamique*® *dinamique*®



*For a dynamic smile.  
Self-ligating brackets in ceramic and metal.*





## **dinamique<sup>®</sup>** *c*

*The self-ligating ceramic bracket dinamique<sup>®</sup> c from Dentaureum has much to offer: for the patient, the brackets offer perfect aesthetics and are comfortable to wear; for the dental office, they are easy to handle and offer effective treatment with only short periods of time in the chair.*

## **dinamique<sup>®</sup>** *m*

*The self-ligating metal bracket dinamique<sup>®</sup> m from Dentaureum fulfills all of the requirements of a modern, self-ligating bracket system. It has a low profile and is therefore comfortable for the patient to wear. It is also safe and easy to use.*



***Water-soluble color marking.***

*Easy matching to correct tooth.*



***From passive to active.***

*Ideal control during all treatment phases.*



***Anatomically adapted bracket base.***

*Perfect fit on tooth.*



***Base with aluminum oxide balls.***

*Good retention and easy, calculable debonding.*





# **dinamique** *Self-ligating ceramic bracket.*



## ***Rounded edges and optimum wing design.***

*Extremely comfortable to wear and easy, flexible ligation.*



## ***Rhodium-coated clip made of premium cobalt-chrome alloy.***

*Long durability. Easy to open and close. Good aesthetics.*



## ***Guide slot with closing clip.***

*Safe throughout the entire therapy.*



## ***Perfect color adaptation to the natural teeth.***

*More aesthetics.*

**Hook with mushroom head design.**

*Secure hold for elastomeric elements.*



**Water-soluble color marking.**

*Easy matching to correct tooth.*



**From passive to active.**

*Ideal control during all treatment phases.*



**Anatomically adapted bracket base.**

*Perfect fit on tooth.*



**Large tie wing undercuts.**

*Secure hold for elastomeric elements.*

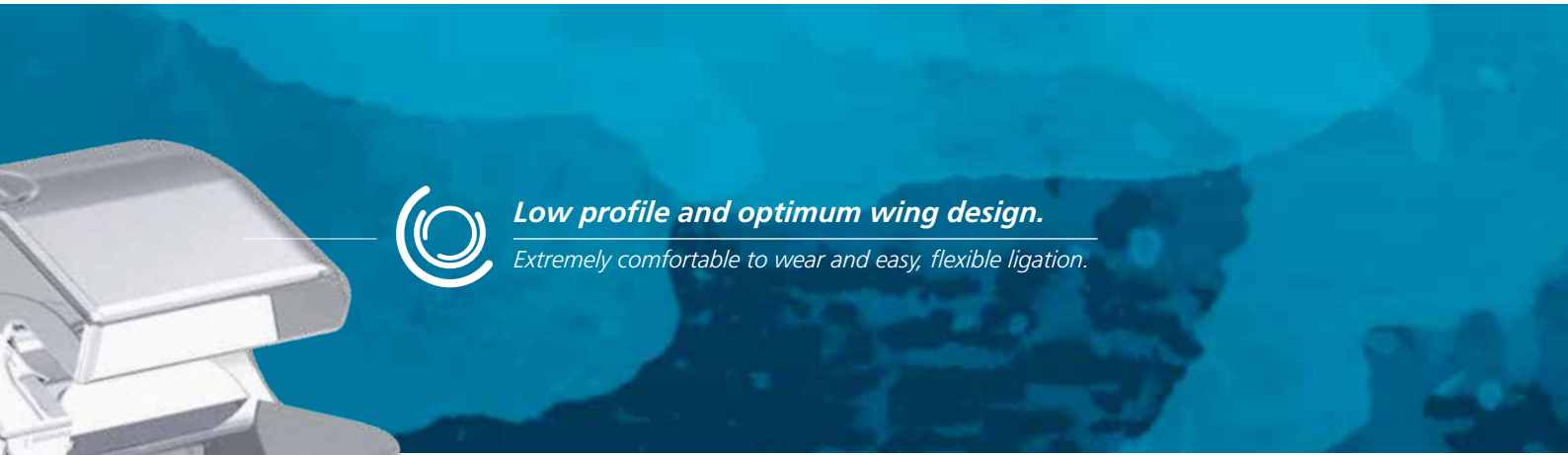


**Micro-etched mesh base.**

*Good retention and easy, calculable debonding.*



# **dinamique** *Self-ligating metal bracket.*



## ***Low profile and optimum wing design.***

*Extremely comfortable to wear and easy, flexible ligation.*



## ***Clip made of premium cobalt-chrome alloy.***

*Long durability. Easy to open and close.*



## ***Guide slot with closing clip.***

*Safe throughout the entire therapy.*



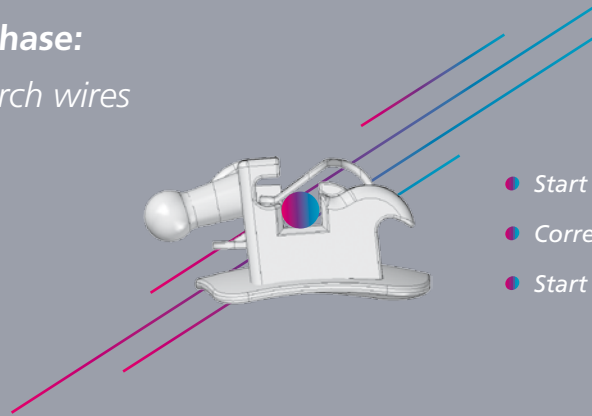
## ***Mid-line marking.***

*Easy to place on tooth.*

# Optimum arch sequences for *dinamique*®.

1

## Initial phase: Round arch wires



- Start of leveling and aligning.
- Correction of rotations.
- Start of dental arch development.

### *Tensic*® (thermo-active nickel titanium)

REF	Diameter	Quantity	
766-702-00	ø 0.35 mm/14	10 pieces	
766-704-00	ø 0.40 mm/16	10 pieces	Maxilla
766-706-00	ø 0.45 mm/18	10 pieces	

REF	Diameter	Quantity	
766-703-00	ø 0.35 mm/14	10 pieces	
766-705-00	ø 0.40 mm/16	10 pieces	Mandible
766-707-00	ø 0.45 mm/18	10 pieces	

### *Tensic*® White (thermo-active nickel titanium, white coated)

REF	Diameter	Quantity	
768-026-00	ø 0.40 mm/16	3 pieces	Maxilla
768-028-00	ø 0.45 mm/18	3 pieces	

REF	Diameter	Quantity	
768-027-00	ø 0.40 mm/16	3 pieces	Mandible
768-029-00	ø 0.45 mm/18	3 pieces	

### *rematitan*® "LITE" (nickel titanium)

REF	Diameter	Quantity*	
766-080-00	ø 0.35 mm/14	10 pieces	
766-082-00	ø 0.40 mm/16	10 pieces	Maxilla
766-084-00	ø 0.45 mm/18	10 pieces	

REF	Diameter	Quantity*	
766-081-00	ø 0.35 mm/14	10 pieces	
766-083-00	ø 0.40 mm/16	10 pieces	Mandible
766-085-00	ø 0.45 mm/18	10 pieces	

\* also available in packages with 50 pieces

\* also available in packages with 50 pieces

### *rematitan*® "LITE" White (nickel titanium, white coated)

REF	Diameter	Quantity	
768-014-00	ø 0.40 mm/16	3 pieces	Maxilla
768-016-00	ø 0.45 mm/18	3 pieces	

REF	Diameter	Quantity	
768-015-00	ø 0.40 mm/16	3 pieces	Mandible
768-017-00	ø 0.45 mm/18	3 pieces	

### *rematitan*® sl (nickel titanium)

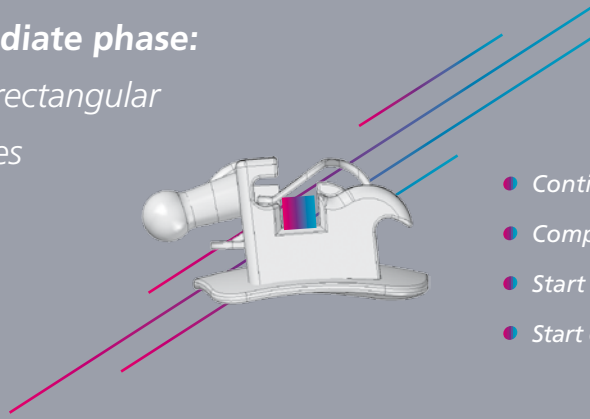
REF	Diameter	Quantity	
766-272-00	ø 0.35 mm/14	10 pieces	
766-274-00	ø 0.40 mm/16	10 pieces	Maxilla
766-276-00	ø 0.45 mm/18	10 pieces	

REF	Diameter	Quantity	
766-273-00	ø 0.35 mm/14	10 pieces	
766-275-00	ø 0.40 mm/16	10 pieces	Mandible
766-277-00	ø 0.45 mm/18	10 pieces	



2

**Intermediate phase:**  
Square / rectangular  
arch wires



- Continuation of dental arch development.
- Completion of leveling and aligning.
- Start of torque control.
- Start of coordination of dental arch shapes.

*Tensic®*, rectangular (thermo-active nickel titanium)

REF		Quantity	
766-710-00	∅ 0,41x0,41/16x16	10 pieces	Maxilla
766-712-00	∅ 0,41x0,56/16x22	10 pieces	Maxilla

REF		Quantity	
766-711-00	∅ 0,41x0,41/16x16	10 pieces	Mandible
766-713-00	∅ 0,41x0,56/16x22	10 pieces	Mandible

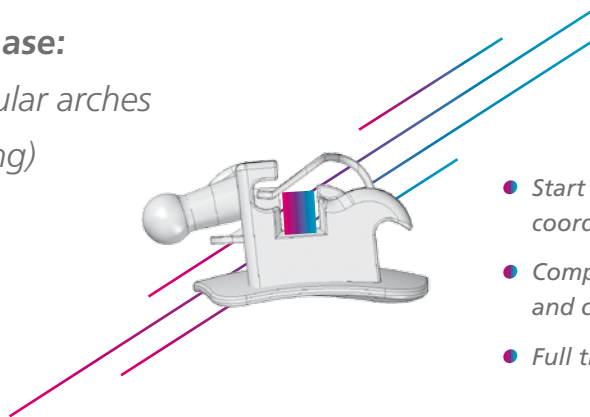
*Tensic® White*, rectangular (thermo-active nickel titanium, white coated)

REF		Quantity	
768-030-00	∅ 0,41x0,41/16x16	3 pieces	Maxilla
768-032-00	∅ 0,41x0,56/16x22	3 pieces	Maxilla

REF		Quantity	
768-031-00	∅ 0,41x0,41/16x16	3 pieces	Mandible
768-033-00	∅ 0,41x0,56/16x22	3 pieces	Mandible

3

**Final phase:**  
Rectangular arches  
(slot-filling)



- Start of consolidating posterior teeth and coordination of dental arch shapes.
- Completion of consolidating posterior teeth and coordination of dental arch shapes.
- Full transmission of torque.

*remanium®*, rectangular (stainless steel)

REF		Quantity	
767-104-00	∅ 0,46x0,64/18x25	10 pieces	Maxilla
767-105-00	∅ 0,48x0,64/19x25	10 pieces	

REF		Quantity	
767-204-00	∅ 0,46x0,64/18x25	10 pieces	Mandible
767-205-00	∅ 0,48x0,64/19x25	10 pieces	

*rematitan® SPECIAL*, rectangular (nickel-free titanium molybdenum)

REF		Quantity	
766-617-00	∅ 0,48x0,64/19x25	10 pieces	Maxilla

REF		Quantity	
766-618-00	∅ 0,48x0,64/19x25	10 pieces	Mandible

*Working with dinamique® is easy.*



**OPEN**

**CLOSE**

**DEBONDING**



**Easy to open:** pull gently towards occlusal using sl-instrument. The clip opens.



**Easy to close:** push the clip gently with your finger towards the gingiva. Make sure that the clip is completely closed.



**Safe debonding:** take hold of the bracket with the debonding pliers and press the pliers gently together until the bracket frees itself from the tooth. Remove remaining adhesive.

## Our marketing offer for you.

- Patient brochure
- Demo models

## Assortments and accessories.

### Bracket assortments

REF	Description	Quantity
700-550-00	dinamique® c, Roth 22, 1 case assortment, hook on 3-5	1 case
700-551-00	dinamique® c, MBT* 22, 1 case assortment, hook on 3-5	1 case
891-410-00	dinamique® m, Roth 22, 1 case assortment, hook on 3-5	1 case
891-411-00	dinamique® m, MBT* 22, 1 case assortment, hook on 3-5	1 case

\* The Dentaurem version of this prescription is not claimed to be a duplication of any other, nor does Dentaurem imply that it is endorsed in any way by Drs. McLaughlin, Bennett and Trevisi.



### Accessories

REF	Description	Quantity
023-276-00	sl-instrument	1 piece
004-346-00	Bracket removing pliers, straight	1 piece
004-347-00	Bracket removing pliers, angled	1 piece
774-216-00	SUPER Elasto-Force plastic chain, ring inner diameter 1.3 mm, length 4.5 m	1 roll
774-217-00	SUPER Elasto-Force plastic chain, with connector, ring inner diameter 1.3 mm, length 4.5 m	1 roll
774-210-00	SUPER Elasto-Force plastic chain, with connector, ring inner diameter 1.3 mm, length 3.5 m	1 roll
774-211-00	SUPER Elasto-Force plastic chain, ring inner diameter 1.3 mm, length 3.5 m	1 roll

# Dentaurum Group

Germany | Benelux | España | France | Italia | Switzerland | Australia | Canada | USA  
and in more than 130 countries worldwide.



DENTAURUM  
QUALITY  
WORLDWIDE  
UNIQUE

➔ For more information on our products and services, please visit [www.dentaurum.com](http://www.dentaurum.com)

Date of information: 06/17

Subject to modifications



[www.dentaurum.com](http://www.dentaurum.com)



Like us on Facebook!



Visit us on YouTube!



Follow us on Pinterest!

