

The connection of the future
Conical and platform united



CONTACT
DENTAURUM

Dentaurum GmbH & Co. KG



Turnstr. 31
75228 Ispringen · Germany



info@dentaurum.com
www.dentaurum.com



+49 72 31 / 803 - 0



ONLINE SHOP
SHOP.DENTAURUM.COM

tiologic[®]
TWINFIT

ALWAYS THE RIGHT IMPLANT!

Regardless of whether a platform or a conical connection is required:

with every tioLogic[®] TWINFIT implant, the implantologist and the patient benefit from the freedom to choose at any time between conical and platform.

THE ABUTMENT SWITCH

CONICAL

PLATFORM

SUBCRESTAL

BONE LEVEL



tioLogic[®] TWINFIT is manufactured using state-of-the-art, complex machinery at the Dentaforum headquarters in Ispringen, in the heart of the Northern Black Forest - Made in Germany.

MORE
INFORMATION



tiologic®
TWINFIT

PRO - CONICAL

- Retention of the peri-implant crestal bone
- Optimum soft tissue management
- Tight, conical connection, can be disengaged without tools

Conical seat



Freedom to change at any time between conical and platform connection

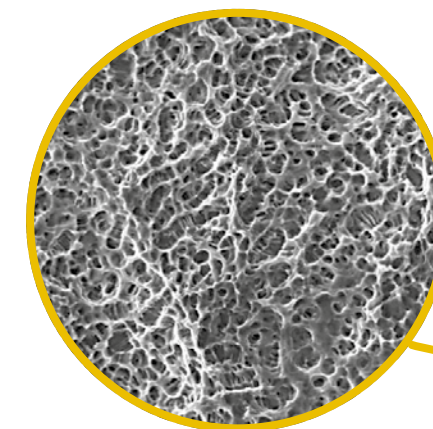
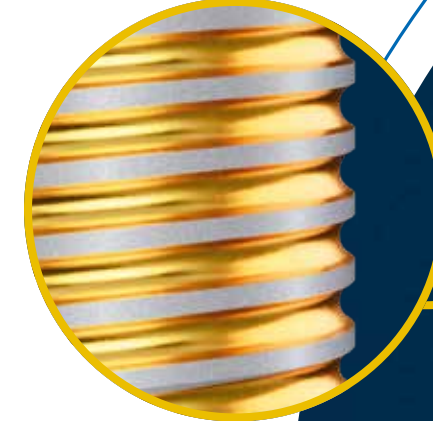
Adaptations resulting from age or individual situation where there are changes to the bone and gingiva.

Easy change to platform connection when the number of abutments is increased.

- ☞ Can be removed and exchanged at any time
- ☞ No auxiliary instrument is required

Crestal, self-tapping fine thread

Safe retention with reduced bone availability



Sandblasted/etched surface

Homogeneous surface structure for optimum bone apposition and growth

Integrated Platform Switch

Reduced number of abutment series (S/M/L)



Progressive, self-tapping coarse thread

High primary stability in the cancellous bone and in immediate implantations



Rounded apex

Easy-grip apical tip and protection of the Schneiderian membrane

tiologic®
TWINFIT

PRO - PLATFORM

- Controlled vertical stop
- Advantage for patients with thin gingival biotype
- Passive fit with bridges and bars

Platform seat

