



750-003-51	1 piece
------------	---------

CE 0483

## Titanium Buttons with Chain by Watted

**For adhesive technique.**

With laser-shaped base and titanium chain.  
For seating displaced front and side teeth.



750-002-50	10 pieces
------------	-----------

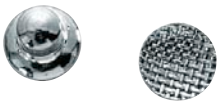
CE 0483

## Lingual Buttons

**For the direct bonding technique.**

With mesh base for bonding, flat base.  
For anteriors.

**3.5 x 3.3 mm (H x W)**



750-002-60	10 pieces
------------	-----------

CE 0483

## Lingual Buttons

**For the direct bonding technique.**

With mesh base for bonding, contoured base.  
For posteriors.

**ø 3.1 mm**



750-602-50	10 pieces
------------	-----------

CE 0483

## Lingual Cleats

**For the direct bonding technique.**

With mesh base for bonding, flat.  
For additional elastics or traction springs.

**3.5 x 3.3 mm (H x W)**



799-202-00	10 pieces
------------	-----------

CE 0483

## Mesh Bases

**For the direct bonding technique.**

Anatomically contoured.  
Flat, for centrals.

**3.8 x 3.8 mm (H x W)**



799-204-00	10 pieces
------------	-----------

CE 0483

Curved, for cuspids and first bicuspid.

**4.0 x 4.5 mm (H x W)**



799-205-00	10 pieces
------------	-----------

CE 0483

For buccal tubes, large mesh base.  
For first molars.

**3.8 x 8.3 mm (H x W)**



799-206-00	10 pieces
------------	-----------

CE 0483

For buccal tubes, small mesh base.  
For second molars.

**3.0 x 6.5 mm (H x W)**



316-000-00	1 piece
------------	---------

CE 0483

## Gauze

**Fine mesh**

For making individual retentive bases.  
Periodontal splint etc., 10 x 10 cm.

## Protection Wax

For relief from irritation caused by brackets and ligature wires.

### Patient packs:

50 boxes of 5 bars each.

**Color: white**

124-305-00	50 x 5 pieces
------------	---------------

CE



## Bonding Organization Tray

With self sticking foil to pre-sort brackets.

891-002-00	50 pieces
------------	-----------



## Bracket Container

For storage of previously sorted brackets.

891-001-00	1 piece
------------	---------



## Storage Box for Brackets

For storage of individual brackets.

766-003-00	1 piece
------------	---------



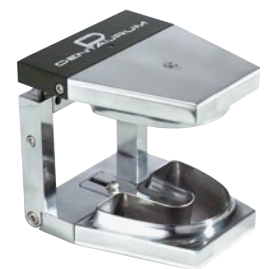
## Typodont / Dentoform

Study and test device for fixed appliances. The unit mechanically corresponds to a simple articulator. Depending upon the task, the metal / plastic teeth are set in the wax sockets, banded or bonded with brackets and the arch wire fitted.

### Availability:

Unit without teeth and accessories.

050-801-00	1 piece
------------	---------



## Metal/Plastic Teeth

For Typodont/Dentoform Unit REF 050-801-00.

Tooth crowns made of plastic.

Tooth roots made of metal.

050-803-01	28 pieces
------------	-----------





050-802-00

1 pair

## Wax Bases

Upper and lower ideal occlusion.  
For Typodont / Dentoform Units  
REF 050-801-00



892-001-00

1 piece

## Jaw Orthopedic Study Models

Upper and lower jaws, made of plastic.

### Angle Class I

Normal occlusion



892-002-01

1 piece

### Angle Class II / 1

Distal occlusion



892-002-02

1 piece

### Angle Class II / 2

Distal occlusion with deep bite



892-003-00

1 piece

### Angle Class III

Mesial occlusion  
Progene Verzahnung



892-000-07

1 piece

## Orthodontic Demonstration Models

Maxillary and mandibular white plastic models are hinged, bonded with brackets, preformed bands and ligated arches.

**discovery**® Metal brackets and bands,  
Roth 22.

## Orthodontic Demonstration Models

Maxillary and mandibular white plastic models are hinged, bonded with brackets, preformed bands and ligated arches.

**Elegance**® Plastic brackets, bands and "White" Arches, Roth 22.

<b>892-000-10</b>	1 piece
-------------------	---------



**Fascination**® 2 Ceramic brackets, bands and "White" Arches, Roth 22.

<b>892-000-11</b>	1 piece
-------------------	---------



**equilibrium**® 2 Metal brackets and bands, McLaughlin-Bennett-Trevisi\* 22 and SUS<sup>2</sup> - Sabbagh Universal Spring.

\* The Dentaurem version of this prescription is not claimed to be a duplication of any other, nor does Dentaurem imply that it is endorsed in any way by Drs. McLaughlin, Bennett and Trevisi.

<b>892-000-13</b>	1 piece
-------------------	---------



**equilibrium**® mini / **equilibrium**® 2 Metal brackets, bands and Ortho-Cast™ mini buccal tubes, Roth 22.

<b>892-000-14</b>	1 piece
-------------------	---------

