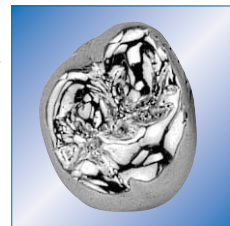


Infogramm®

remanium® LFC

Characteristics

remanium® LFC is a modern chrome cobalt alloy specially designed for metal-ceramic veneering of crown and bridgework using low-fusing porcelain (LFC).



Indications

Multi-purpose alloy:

- for crown and bridgework
- secondary crowns
- secondary crowns for chrome cobalt dentures (fixed/removable appliances)

Product advantages

- reliable veneering using LFC-porcelains which, until now, were used only with precious alloys
- excellent melting and casting behaviour with all melting and casting techniques
- effortless trimming and polishing
- free from nickel and beryllium
- high purity resulting from continuous casting production
- multi-indicative
- high corrosion resistance
- high mechanical strength
- good laser welding characteristics



Composition
Percentages by mass

Co	Cr	Fe	Mo	Mn
33	30	29	5	1.5

Additional elements less than 1 %: Si, N, C

Technical data
(ISO 9693)

Yield strength $R_{p0,2}$ (MPa)	660
Tensile strength R_m (MPa)	950
Modulus of elasticity E (GPa)	200
Hardness (HV ₁₀)	315
Fracture elongation A_5 (%)	11
Solidus T_s (°C/°F)	1280/2336
Liquidus T_l (°C/°F)	1350/2462
Density g/cm ³	8.2
CTE (25-500 °C/77-932°F) (K ⁻¹)	15.9 x 10 ⁻⁶
Melting	+++
Casting	+++
Torch melting	+++
Finishing	+++
Milling characteristics	+++
Ceramic bonding	+++ (LFC) ¹
Polishing	+++
Oxide bake	No
Laser welding	+++
Soldering with CoCr	REF 102-306-00
Investment material	Castorit® all speed Trivest Castorit® super C

+++ = excellent, ¹ LFC = Low Fusing Ceramics

Test marking/patents/
certificates of quality

CE 0483

Units available to order

50 g	REF 102-641-00
250 g	REF 102-642-00
1000 g	REF 102-640-00

Date of information

03/05

