

dinamique[®] *dinamique*[®]



For a dynamic smile.
Self-ligating brackets in ceramic and metal.



D
DENTAURUM



dinamique[®] *c*

*The self-ligating ceramic bracket *dinamique*[®] c from Dentaureum has much to offer: for the patient, the brackets offer perfect aesthetics and are comfortable to wear; for the dental office, they are easy to handle and offer effective treatment with only short periods of time in the chair.*

dinamique[®] *m*

*The self-ligating metal bracket *dinamique*[®] m from Dentaureum fulfills all of the requirements of a modern, self-ligating bracket system. It has a low profile and is therefore comfortable for the patient to wear. It is also safe and easy to use.*



Water-soluble color marking.

Easy matching to correct tooth.



From passive to active.

Ideal control during all treatment phases.



Anatomically adapted bracket base.

Perfect fit on tooth.



Base with aluminum oxide balls.

Good retention and easy, calculable debonding.



dinamique *Self-ligating ceramic bracket.*



Rounded edges and optimum wing design.

Extremely comfortable to wear and easy, flexible ligation.



Rhodium-coated clip made of premium cobalt-chrome alloy.

Long durability. Easy to open and close. Good aesthetics.



Guide slot with closing clip.

Safe throughout the entire therapy.



Perfect color adaptation to the natural teeth.

More aesthetics.

Hook with mushroom head design.

Secure hold for elastomeric elements.



Water-soluble color marking.

Easy matching to correct tooth.



From passive to active.

Ideal control during all treatment phases.



Anatomically adapted bracket base.

Perfect fit on tooth.



Large tie wing undercuts.

Secure hold for elastomeric elements.



Micro-etched mesh base.

Good retention and easy, calculable debonding.



dinamique *Self-ligating metal bracket.*



Low profile and optimum wing design.

Extremely comfortable to wear and easy, flexible ligation.



Clip made of premium cobalt-chrome alloy.

Long durability. Easy to open and close.



Guide slot with closing clip.

Safe throughout the entire therapy.



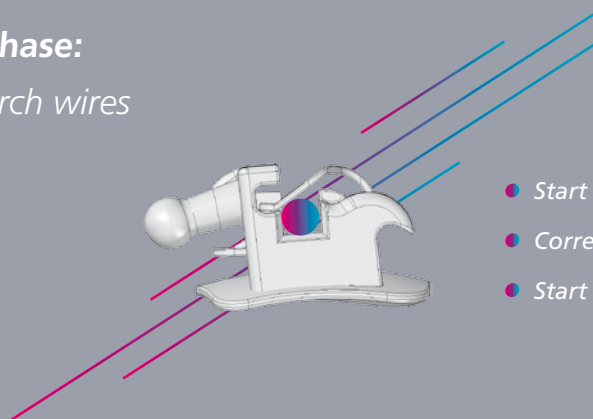
Mid-line marking.

Easy to place on tooth.

Optimum arch sequences for dinamique®.



Initial phase: Round arch wires



- Start of leveling and aligning.
- Correction of rotations.
- Start of dental arch development.

Tensic® (thermo-active nickel titanium)

REF	Diameter	Quantity	
766-702-00	ø 0.35 mm/14	10 pieces	
766-704-00	ø 0.40 mm/16	10 pieces	Maxilla
766-706-00	ø 0.45 mm/18	10 pieces	

REF	Diameter	Quantity	
766-703-00	ø 0.35 mm/14	10 pieces	
766-705-00	ø 0.40 mm/16	10 pieces	Mandible
766-707-00	ø 0.45 mm/18	10 pieces	

Tensic® White (thermo-active nickel titanium, white coated)

REF	Diameter	Quantity	
768-026-00	ø 0.40 mm/16	3 pieces	Maxilla
768-028-00	ø 0.45 mm/18	3 pieces	

REF	Diameter	Quantity	
768-027-00	ø 0.40 mm/16	3 pieces	Mandible
768-029-00	ø 0.45 mm/18	3 pieces	

rematitan® "LITE" (nickel titanium)

REF	Diameter	Quantity*	
766-080-00	ø 0.35 mm/14	10 pieces	
766-082-00	ø 0.40 mm/16	10 pieces	Maxilla
766-084-00	ø 0.45 mm/18	10 pieces	

* also available in packages with 50 pieces

REF	Diameter	Quantity*	
766-081-00	ø 0.35 mm/14	10 pieces	
766-083-00	ø 0.40 mm/16	10 pieces	Mandible
766-085-00	ø 0.45 mm/18	10 pieces	

* also available in packages with 50 pieces

rematitan® "LITE" White (nickel titanium, white coated)

REF	Diameter	Quantity	
768-014-00	ø 0.40 mm/16	3 pieces	Maxilla
768-016-00	ø 0.45 mm/18	3 pieces	

REF	Diameter	Quantity	
768-015-00	ø 0.40 mm/16	3 pieces	Mandible
768-017-00	ø 0.45 mm/18	3 pieces	

rematitan® sl (nickel titanium)

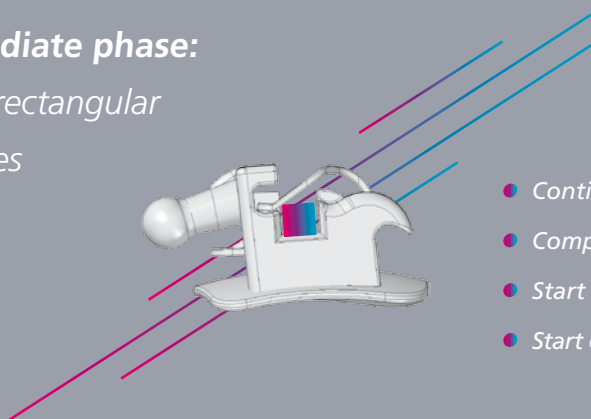
REF	Diameter	Quantity	
766-272-00	ø 0.35 mm/14	10 pieces	
766-274-00	ø 0.40 mm/16	10 pieces	Maxilla
766-276-00	ø 0.45 mm/18	10 pieces	

REF	Diameter	Quantity	
766-273-00	ø 0.35 mm/14	10 pieces	
766-275-00	ø 0.40 mm/16	10 pieces	Mandible
766-277-00	ø 0.45 mm/18	10 pieces	

2

Intermediate phase:

Square / rectangular arch wires



- Continuation of dental arch development.
- Completion of leveling and aligning.
- Start of torque control.
- Start of coordination of dental arch shapes.

Tensic®, rectangular (thermo-active nickel titanium)

REF		Quantity	
766-710-00	∅ 0,41x0,41/16x16	10 pieces	Maxilla
766-712-00	∅ 0,41x0,56/16x22	10 pieces	Maxilla

REF		Quantity	
766-711-00	∅ 0,41x0,41/16x16	10 pieces	Mandible
766-713-00	∅ 0,41x0,56/16x22	10 pieces	Mandible

Tensic® White, rectangular (thermo-active nickel titanium, white coated)

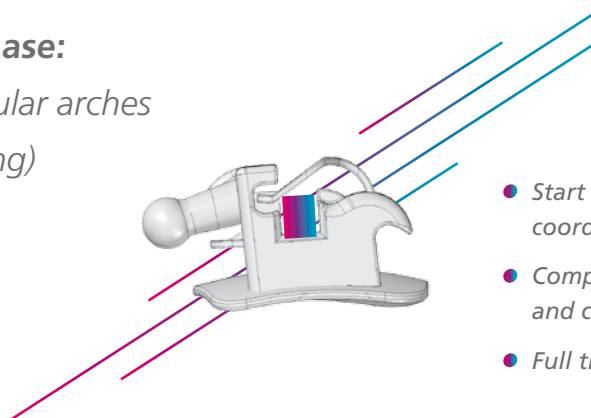
REF		Quantity	
768-030-00	∅ 0,41x0,41/16x16	3 pieces	Maxilla
768-032-00	∅ 0,41x0,56/16x22	3 pieces	Maxilla

REF		Quantity	
768-031-00	∅ 0,41x0,41/16x16	3 pieces	Mandible
768-033-00	∅ 0,41x0,56/16x22	3 pieces	Mandible

3

Final phase:

Rectangular arches (slot-filling)



- Start of consolidating posterior teeth and coordination of dental arch shapes.
- Completion of consolidating posterior teeth and coordination of dental arch shapes.
- Full transmission of torque.

remanium®, rectangular (stainless steel)

REF		Quantity	
767-104-00	∅ 0,46x0,64/18x25	10 pieces	Maxilla
767-105-00	∅ 0,48x0,64/19x25	10 pieces	

REF		Quantity	
767-204-00	∅ 0,46x0,64/18x25	10 pieces	Mandible
767-205-00	∅ 0,48x0,64/19x25	10 pieces	

rematitan® SPECIAL, rectangular (nickel-free titanium molybdenum)

REF		Quantity	
766-617-00	∅ 0,48x0,64/19x25	10 pieces	Maxilla

REF		Quantity	
766-618-00	∅ 0,48x0,64/19x25	10 pieces	Mandible

Working with dinamique® is easy.



OPEN

CLOSE

DEBONDING



Easy to open: pull gently towards occlusal using sl-instrument. The clip opens.



Easy to close: push the clip gently with your finger towards the gingiva. Make sure that the clip is completely closed.



Safe debonding: take hold of the bracket with the debonding pliers and press the pliers gently together until the bracket frees itself from the tooth. Remove remaining adhesive.

Our marketing offer for you.

- Patient brochure
- Demo models

Assortments and accessories.

Bracket assortments

REF	Description	Quantity
700-550-00	dinamique® c, Roth 22, 1 case assortment, hook on 3-5	1 case
700-551-00	dinamique® c, MBT* 22, 1 case assortment, hook on 3-5	1 case
891-410-00	dinamique® m, Roth 22, 1 case assortment, hook on 3-5	1 case
891-411-00	dinamique® m, MBT* 22, 1 case assortment, hook on 3-5	1 case

* The Dentaurem version of this prescription is not claimed to be a duplication of any other, nor does Dentaurem imply that it is endorsed in any way by Drs. McLaughlin, Bennett and Trevisi.



Accessories

REF	Description	Quantity
023-276-00	sl-instrument	1 piece
004-346-00	Bracket removing pliers, straight	1 piece
004-347-00	Bracket removing pliers, angled	1 piece
774-216-00	SUPER Elasto-Force plastic chain, ring inner diameter 1.3 mm, length 4.5 m	1 roll
774-217-00	SUPER Elasto-Force plastic chain, with connector, ring inner diameter 1.3 mm, length 4.5 m	1 roll
774-210-00	SUPER Elasto-Force plastic chain, with connector, ring inner diameter 1.3 mm, length 3.5 m	1 roll
774-211-00	SUPER Elasto-Force plastic chain, ring inner diameter 1.3 mm, length 3.5 m	1 roll

Dentaurum Group

Germany | Benelux | España | France | Italia | Switzerland | Australia | Canada | USA
and in more than 130 countries worldwide.



DENTAURUM
QUALITY
WORLDWIDE
UNIQUE

➡ For more information on our products and services, please visit www.dentaurum.com

Date of information: 06/17

Subject to modifications



www.dentaurum.com



Like us on Facebook!



Visit us on YouTube!



Follow us on Pinterest!

D
DENTAURUM